

*Record Puck E not included

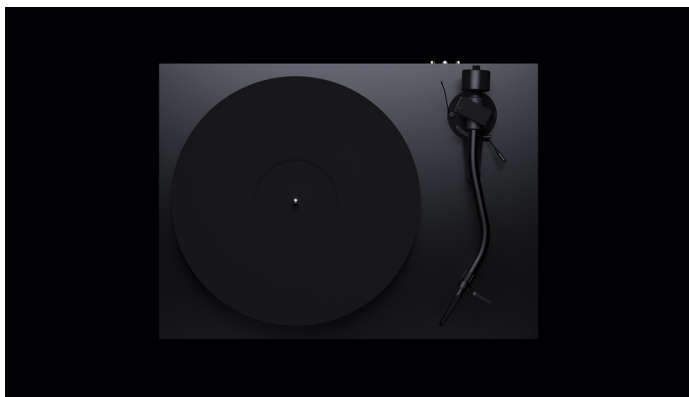
Debut PRO S

Debut PRO with 10" S-shape tonearm

Satin: ●

- **NEW** pre-adjusted Pick it S2 C cartridge
- **NEW** 10" S-shape aluminium tonearm
- **NEW** SME headshell connector
- **NEW** bigger MDF chassis for 10" tonearm
- Fully adjustable VTA
- Precision aluminium platter with TPE damping
- TPE motor suspension
- Height-adjustable metal feet
- Electronic speed switch
- 8x hand-painted MDF chassis
- Premium semi-symmetrical phono cable
- Gold plated RCA connectors
- Dust cover included
- Handmade in Europe

Speed: 33, 45/(78) (electronic speed change)
Drive principle: belt drive with electronic speed control
Platter: 300mm, die cast aluminium platter with TPE damping and felt mat
Platter bearing: high precision stainless steel axle in bronze bushing
Wow & flutter: 33: +/-0,16%; 45: +/-0,14%
Speed drift: 33: +/-0,40%; 45: +/-0,50%
Signal to noise: 68dB
Tonearm: 10" S-shape aluminium; SME connector
Effective arm length/mass: 254 mm / 8 g
Overhang: 16mm
Included accessories: 15V DC / 0,8A power supply, dust cover, 78 RPM round belt, 7" single adapter
Power consumption: 4W / 0W standby
Dimensions: 462 x 145 x 345mm (WxHxD)
Weight: 7 kg net



A perfect shape

Our new Debut PRO S continues our PRO series turntables with style. We followed our philosophy and designed a turntable which nurtures conscious music listening. The Debut PRO S takes this philosophy to the extreme. The manual controls invite the listener to interact with the turntable. The musical reward follows the tactile experience. No unnecessary switches, LEDs or labeling distract from the essential.

Our new s-shaped 10" aluminium tonearm with the PRO typical full aluminium precision CNC milled bearing gives you new possibilities. If you want to use different cartridges on your turntable our Debut PRO S with SME connector has got you covered. As the tonearm is fully adjustable you can dig even deeper and experiment with the turntable's sound. There are no limits!

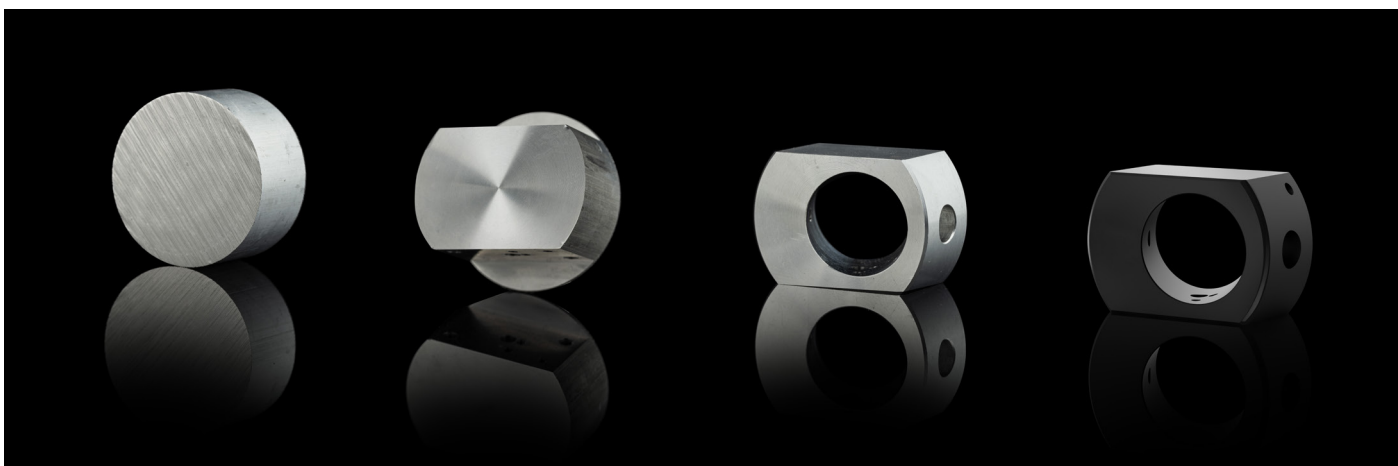
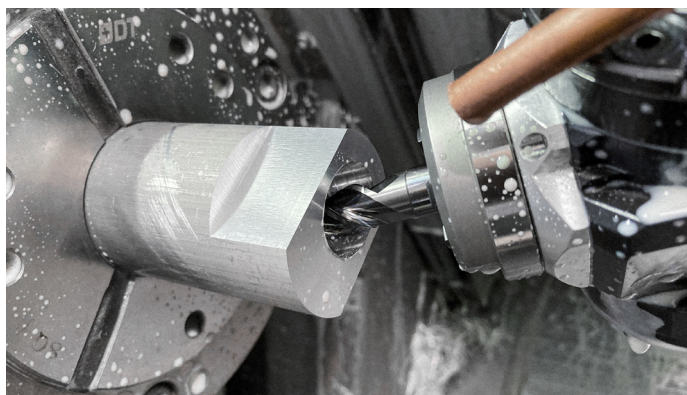
Our new Debut PRO S is handmade in Europe with highest quality materials. Its all black satin hand-painted parts make this turntable an eyecatcher in every livingroom.

CNC'd aluminium metal parts

Take a closer look on our new Debut PRO S. You won't find any hollow spaces or plastic parts. We only use high quality aluminium parts to ensure the best possible sound quality.

The precision CNC milled parts are optically perfectly coordinated and lead the Debut PRO S to its modern simple and unprecedented design.

The satin black painting of the aluminum components results in a beautiful outstanding finish.



10" Aluminium S-Shape Tonearm

This aluminium tonearm ensures excellent damping and the 10" length enables perfect tracking of the record groove with minimal tracking error especially towards the inner grooves.

Compared to a straight tonearm, the S-shape will increase the effective mass of the tonearm, which is great when wanting to upgrade to heavier MC cartridges.



Adjustable VTA & Azimuth

With the new tonearm of the Debut PRO S, both the azimuth and the vertical tracking angle (VTA) can be set. The tonearm height can be continuously adjusted by loosening the two grub screws.

These settings of the Debut PRO S give you the option of adapting the tonearm to height changes, allowing the use of different turntable mats or other cartridges to always achieve the best sound quality.



Always the perfect speed

The speed, electronically controlled with precision, guarantees the most accurate and stable speeds. Change between speeds easily with the toggle switch. With the supplied round belt for 78 rpm, you can also listen to your shellac records.

Together with the diamond cut aluminium sub-platter we can ensure a perfect overall speed accuracy. It also adds more mass to the entire platter and drive system, resulting in additional damping of noise and unwanted resonances.



Dampened die-cast alu platter

The die-cast aluminum platter gets reworked and precision balanced in an extra step to obtain a perfect platter.

The heavy aluminum platter has a ring made of TPE (thermoplastic elastomer) on the inside that helps to dampen all resonances and thus minimize wow and flutter.

