



# Debut EVO 2

Unprecedented Value... Again!

MSRP \$699

- Pre-adjusted Pick it MM EVO cartridge
- Aluminum platter with TPE damping ring
- Low-friction precision tonearm bearing
- Beautiful satin wine red finish
- 8.6" one-piece carbon tonearm
- Motor suspension with improved damping
- Height-adjustable metal feet
- Electronic speed switch
- Belt drive with electronic speed regulation
- 8-coat hand-painted MDF chassis
- Premium semi-symmetrical phono cable
- Gold-plated RCA connectors
- Dust cover included
- Handmade in Europe

Real-wood veneer: 

High gloss:   

Satin:      

**Speeds:** 33 & 45rpm (electronic speed change)  
**Drive principle:** belt drive w/ electronic speed control  
**Platter:** 1.7kg (3.75 lbs) 300mm die-cast aluminum platter with TPE damping & felt mat  
**Platter bearing:** stainless steel axle in bronze bushing  
**Wow & flutter:** +/-0.16% (33rpm), +/-0.14% (45rpm)  
**Speed drift:** +/-0.40% (33rpm), +/-0.50% (45rpm)  
**Signal to noise:** 68dB  
**Tonearm:** 8.6" one-piece carbon tonearm  
**Effective arm length/mass:** 218.5mm / 10.0g  
**Overhang:** 18.5mm  
**Included accessories:** 15V DC 0.8A power supply, dust cover, 7" singles adapter  
**Dimensions (WxHxD):** 415 x 113 x 320mm  
**Dimensions (standard):** 16.34 x 4.45 x 12.60"  
**Mass (Weight):** 6kg (13.23 lbs) net

### Premium Tonearm

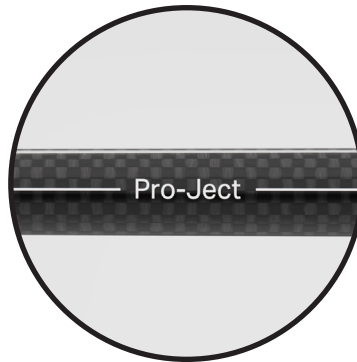
The Debut EVO 2 turntable features a premium 8.6" carbon fiber armtube with a massive aluminum bearing block (like Debut PRO). The low-friction tonearm bearing guarantees precise, stable and accurate tracking. The carbon fiber tube is both highly rigid & low in mass.

The one-piece armtube/headshell design prevents unwanted resonance and offers an ideal physical pairing with the phono cartridge. This superbly-built tonearm delivers impressive sound quality propelled by immersive soundstaging with loads of detail.



#### Adaptive Anti-Skating Mechanism

As the skating force varies between the inner and outer grooves of a vinyl record, our anti-skating mechanism adjusts accordingly.



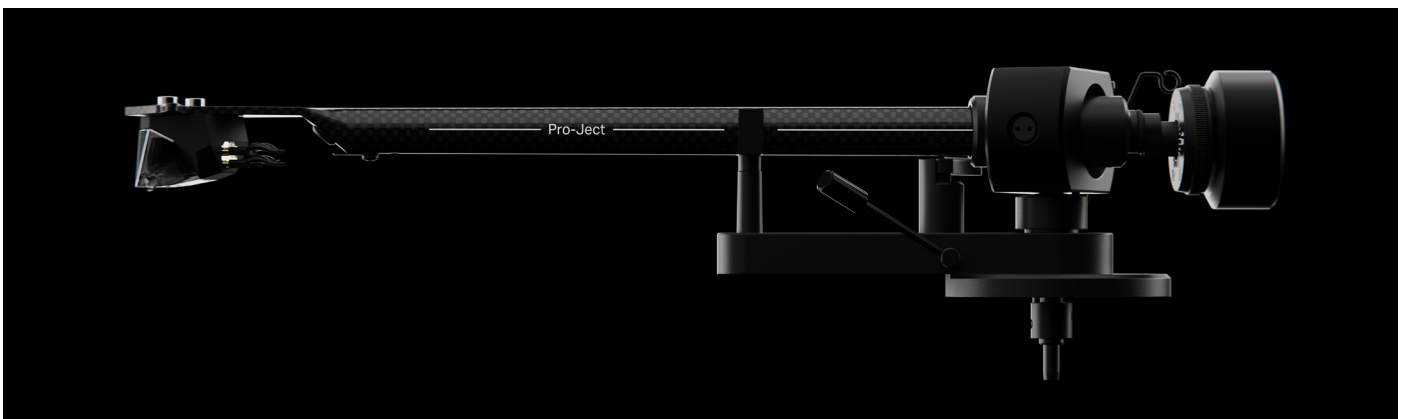
#### Carbon Fiber Tonearm Tube

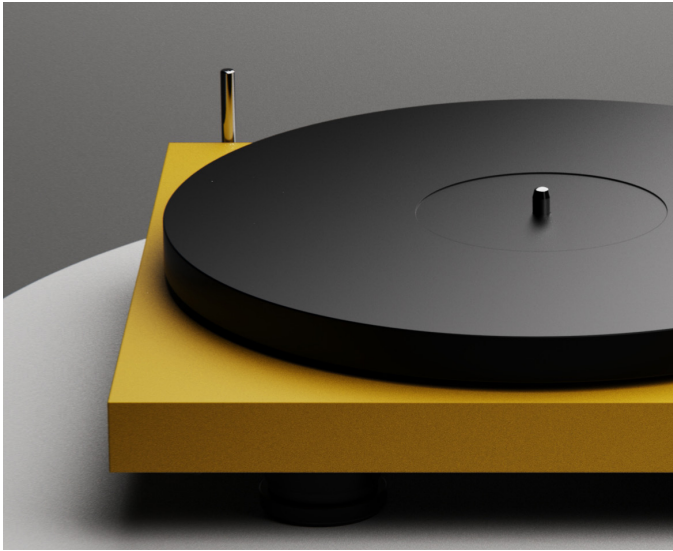
Super stiff and light-weight one-piece 8.6" carbon tonearm design.



#### Massive Low-Friction Bearing

The CNC-milled aluminum bearing block facilitates very low friction & high rigidity.





### TPE-Damped Die-Cast Platter

The 1.7kg (3.75lbs) die-cast aluminum platter is precision balanced with additional machining after casting. This facilitates perfect platter rotation while playing records. The heavy aluminum platter also adds a TPE (thermoplastic elastomer) damping ring & corresponding cutout on the underside, muting any resonance created by the metal record platter and contributing to the flywheel effect.

Advancing the design, Debut EVO 2 moves away from its predecessor's steel platter and welcomes moving coil cartridges.

1.7kg die-cast aluminum



Top view

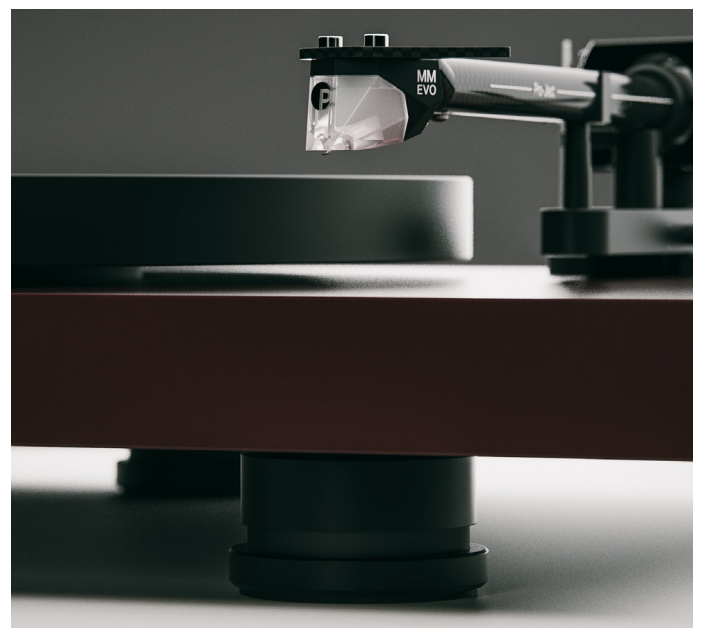
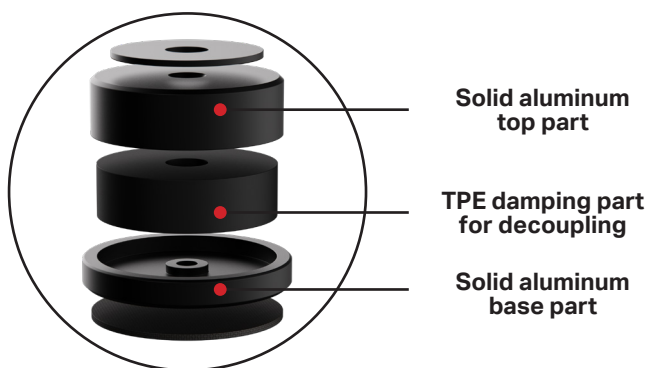
TPE damping ring



Bottom view

### Height-Adjustable Damped Feet

The Debut EVO 2 stands on three height-adjustable TPE-damped feet for easy leveling & great isolation. By using 3 feet we are able to increase stability on uneven surfaces while minimizing surface-contact.





**Pick it MM EVO Phono Cartridge**

The new Pick it MM EVO cartridge completes the Debut EVO 2 in all respects. It compliments the tonearm both sonically & aesthetically.

Our phono specialists teamed up with Danish cartridge specialists to develop this design. It uses split-pole pins known for achieving a flat frequency response that's typically only attainable with moving coil designs.



**Phono Box S3 B**



**Phono Box DS3 B**



**Tube Box DS3 B**

**High-Quality RCA/Ground Cables**

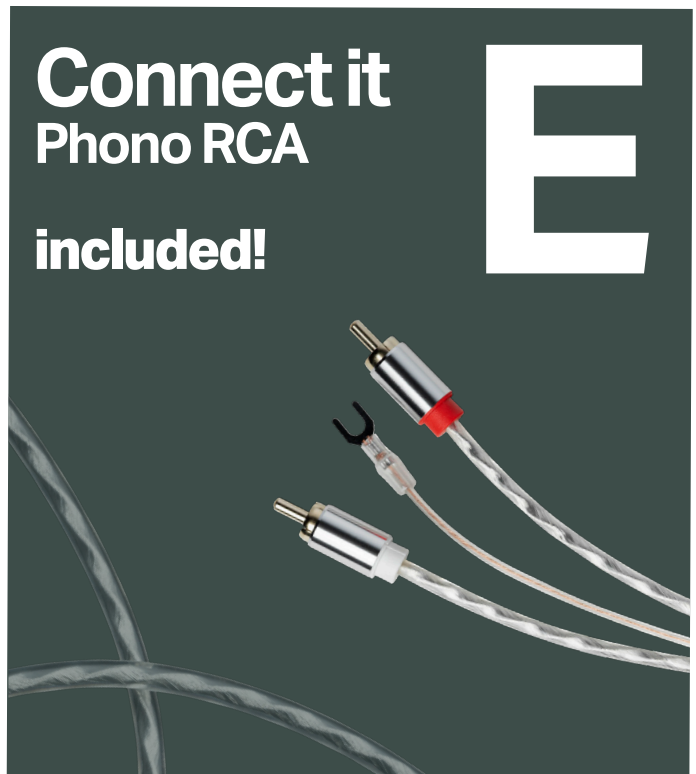
Cables cannot add any information back to a given signal, rather, they're responsible for allowing as much musical information as possible through to the receiving device. This is why we include our Connect it Phono E RCA cable. Optimized for phono applications, we've implemented quality metals & careful configuration to ensure lossless signal transmission.

**Upgrade to TRUE BALANCED**



True Balanced operation is attainable with an RCA > Mini XLR cable and any of the 3 phono preamps above (they have mini XLR inputs).

***EXPLORE CABLES HERE***

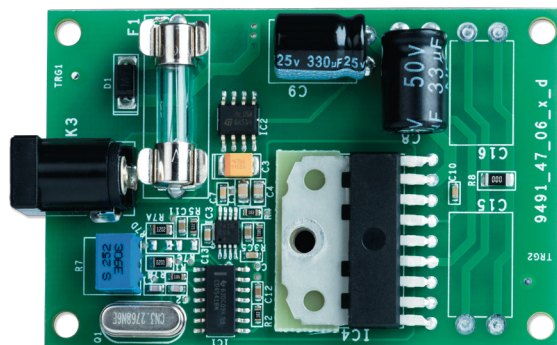


*\*Additionally, to use our True Balanced Connection, your Debut EVO 2 must be equipped with an MC cartridge or Pick it PRO Balanced.*

## Sophisticated DC/AC Generator

Our turntables use switch-mode power supplies for good reason. They take the unrefined AC power from your wall and convert it to DC. That DC power is then fed to DC/AC generator within the turntable, which in turn powers the AC motor.

The advantage is that a completely new sine wave is created by the generator, fully decoupling your turntable from the dirty AC power coming from your outlet. This amounts to steady power being fed to the motor thereby enhancing speed stability.

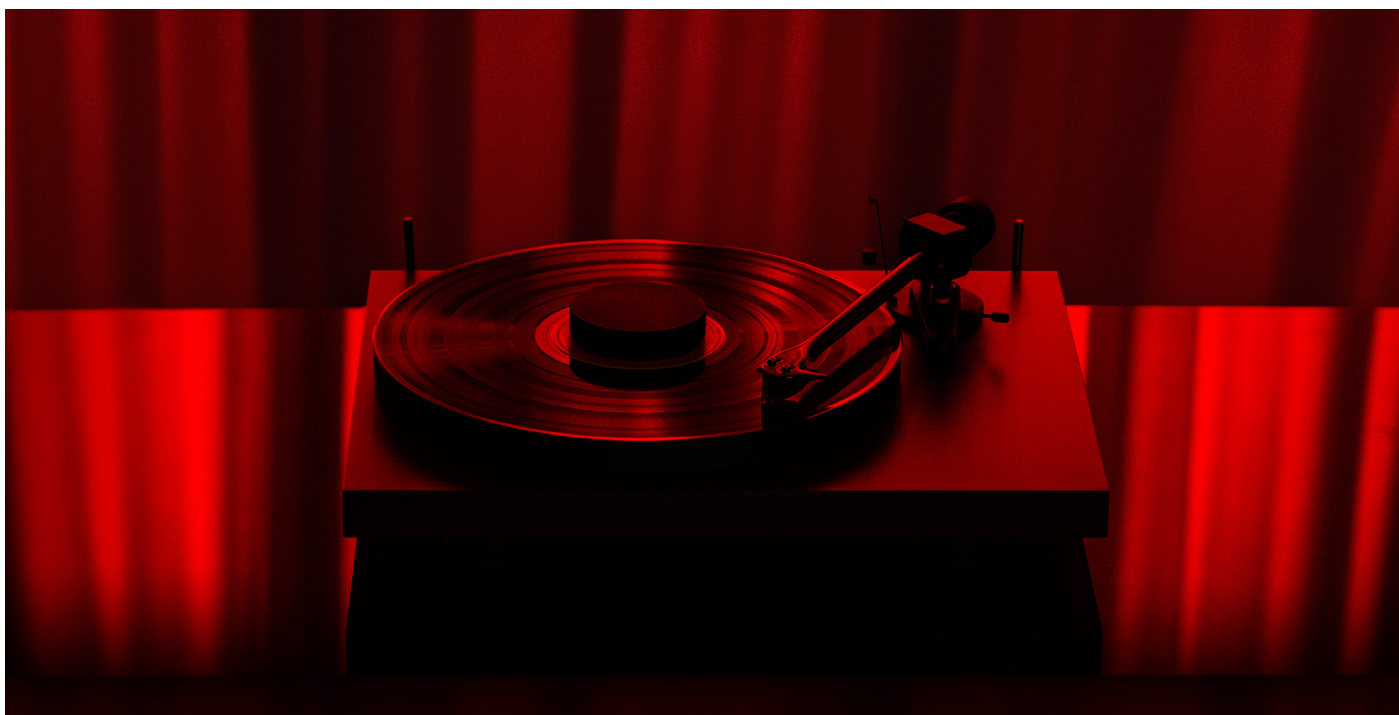


## Two Upgrades in One Box!

Clean & stable power is critical for phono setups. The included power supply is a great starting point but you can take it further.

Power Box S3 Phono provides power for the Debut PRO B (15V) as well as your Pro-Ject phono stage (18V). Its two outputs are specifically engineered to power Pro-Ject turntables and phono preamps simultaneously. The sophisticated DC filtration can have a dramatic impact on overall sound quality.

In addition to the sonic improvements, Power Box S3 Phono also offers users a cleaner cable solution (only one wall-wart needed for the PSU).





High-Gloss Black



High-Gloss Red



High-Gloss White



Satin Black



Satin Wine Red



Satin White



Satin Fir Green



Satin Golden Yellow



Satin Steel Blue



Acrylic dust cover included

Real Walnut Veneer (Satin)